

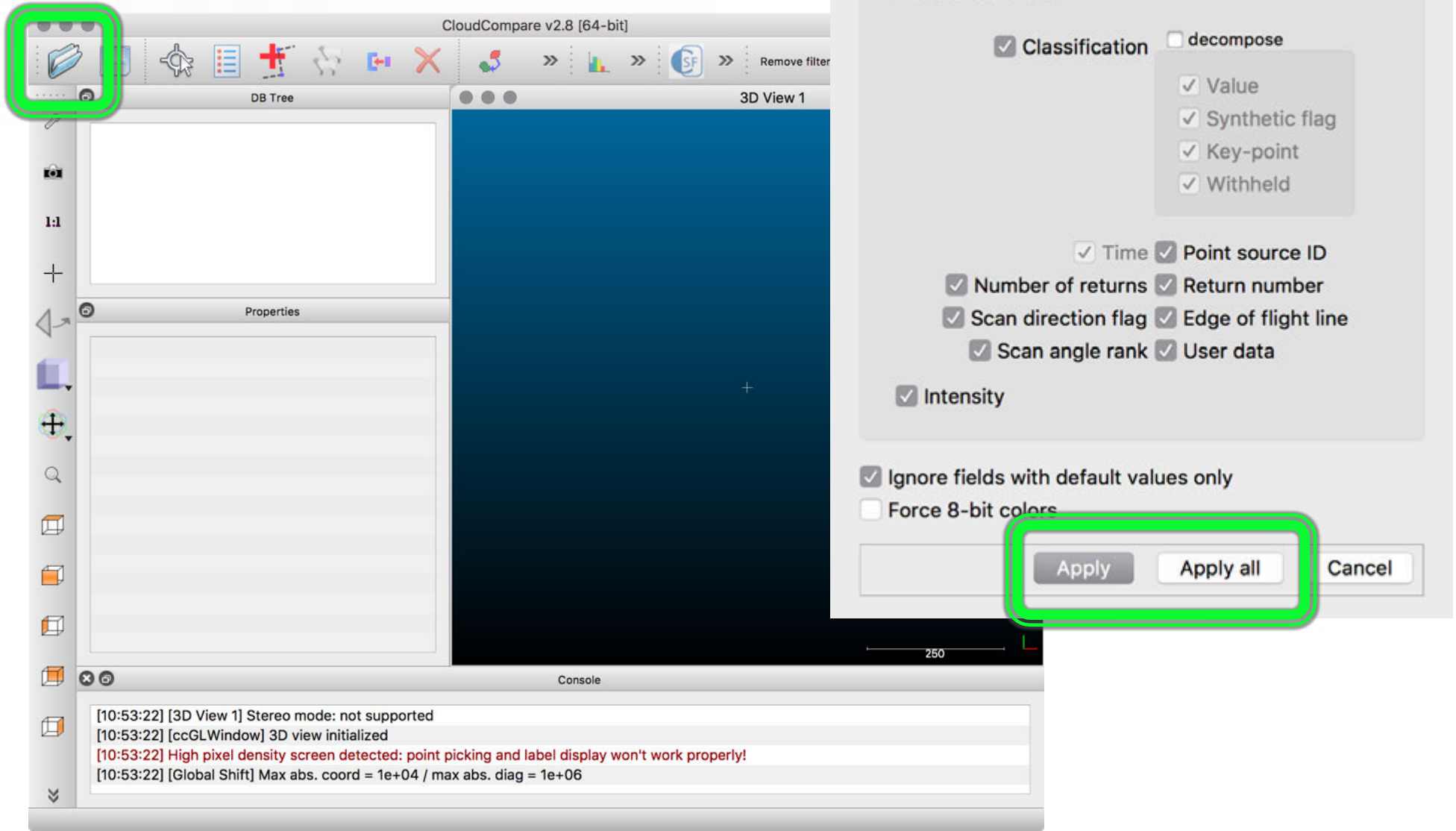
ファイルの読込と表示、保存

LEVEL 00

load/save file

ファイルの読み込み (LAS/LAZ)

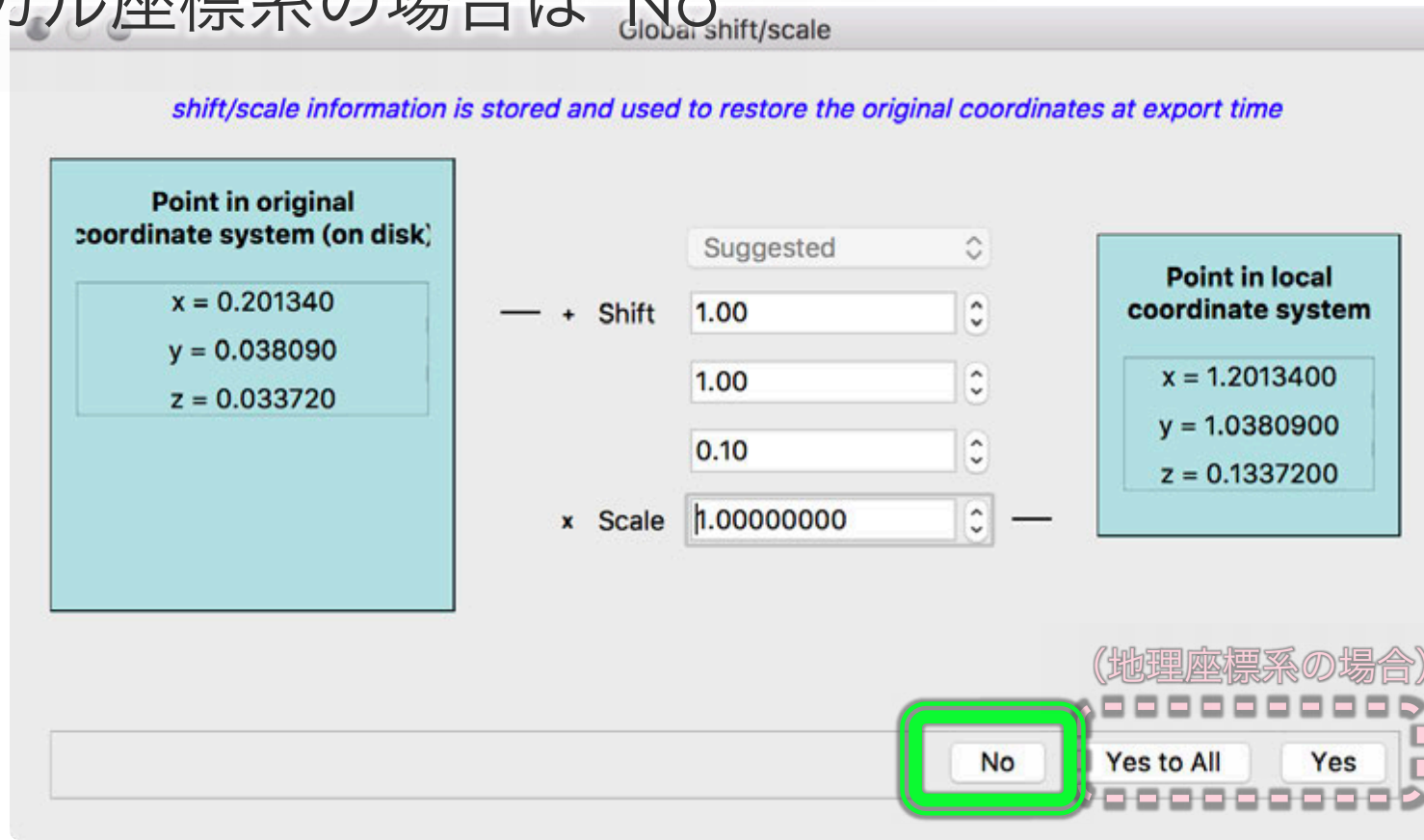
- File > Open
 - もしくは Drag&Drop



ファイルの読み込み (LAS/LAZ)

Global shift/scale

- 地理座標系 (UTM、平面直角等) の場合、座標値が過大に
→表示エラーを招く
 - 読み込み時にオフセットを設定
 - Suggested もしくはカスタム値 (複数の場合は同じ値を)
 - 保存時には元の座標に自動変換される
- ローカル座標系の場合は "No"



ファイルの読み込み (LAS/LAZ)

The screenshot displays the CloudCompare v2.8 [64-bit] interface. The main 3D View shows a point cloud of several large, brown, irregularly shaped rocks resting on a flat, greyish ground surface. The rocks are rendered with a textured, slightly grainy appearance. The 3D View is titled "3D View 1" and includes a scale bar at the bottom right indicating 0.045 units.

The DB Tree (Database Tree) on the left shows a folder structure with the following items:

- 160310_gravel_a_1.laz (/Users/y/Do...)
- 160310_gravel_a_1 - Cloud

The Properties panel below the DB Tree shows the following details for the selected object:

Property	State/Value
CC Object	
Name	160310_gravel_a_1 - Cloud
Visible	<input checked="" type="checkbox"/>
Show name (in ...)	<input type="checkbox"/>
Colors	RGB
Box dimensions	X: 0.28737 Y: 0.16231 Z: 0.0379
Box center	X: 0.124955 Y: 0.064895 Z: 0.01795
Info	Object ID: 4 - Children: 0
Current Display	3D View 1
Cloud	

The Console at the bottom shows the following log messages:

```
[11:08:06] [LAS] All 'Return Number' values were the same (1)! We ignored them...  
[11:08:06] [LAS] All 'Intensity' values were the same (0)! We ignored them...  
[11:08:06] [I/O] File '/Users/y/Downloads/160310_gravel_a_1.laz' loaded successfully  
[11:08:06] [VBO] VBO(s) (re)initialized for cloud '160310_gravel_a_1 - Cloud' (23.00 Mb = 100.00% of points could be loaded)
```


ラベルの表示

The screenshot displays the CloudCompare v2.8 [64-bit] interface. The top toolbar contains various icons, with the 'Pick' icon (a mouse cursor) highlighted by a green square. The left sidebar shows the 'DB Tree' and 'Properties' panels. The 'DB Tree' panel lists the loaded data: '160310_gravel_a_1.laz (/Users/y/Do...)' and '160310_gravel_a_1 - Cloud'. The '3D View 1' panel shows a 3D point cloud of several rocks on a flat surface. A red arrow points to a specific point on one of the rocks, and a small red-bordered box displays the following data:

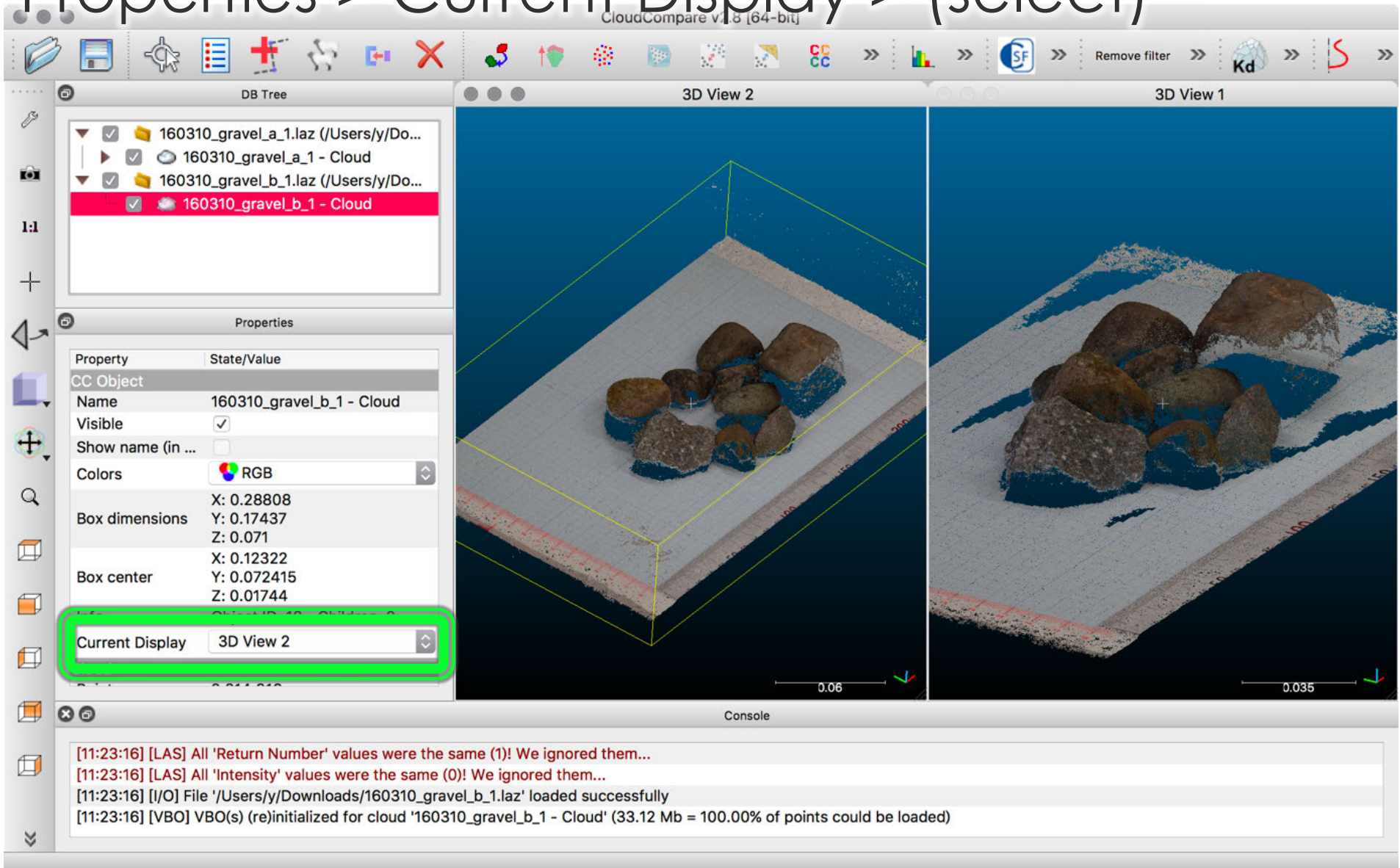
Scan Direction = 1.000000			
X	0.111370	R	52
Y	0.067650	G	36
Z	0.027400	B	25

The 'Console' panel at the bottom shows the following log entries:

```
[11:21:22] [Picked] Point #303668  
[11:21:22] [Picked] - P#303668: (0.111370;0.067650;0.027400)  
[11:21:22] [Picked] - Color: (52;36;25)  
[11:21:22] [Picked] - Scan Direction = 1.000000
```

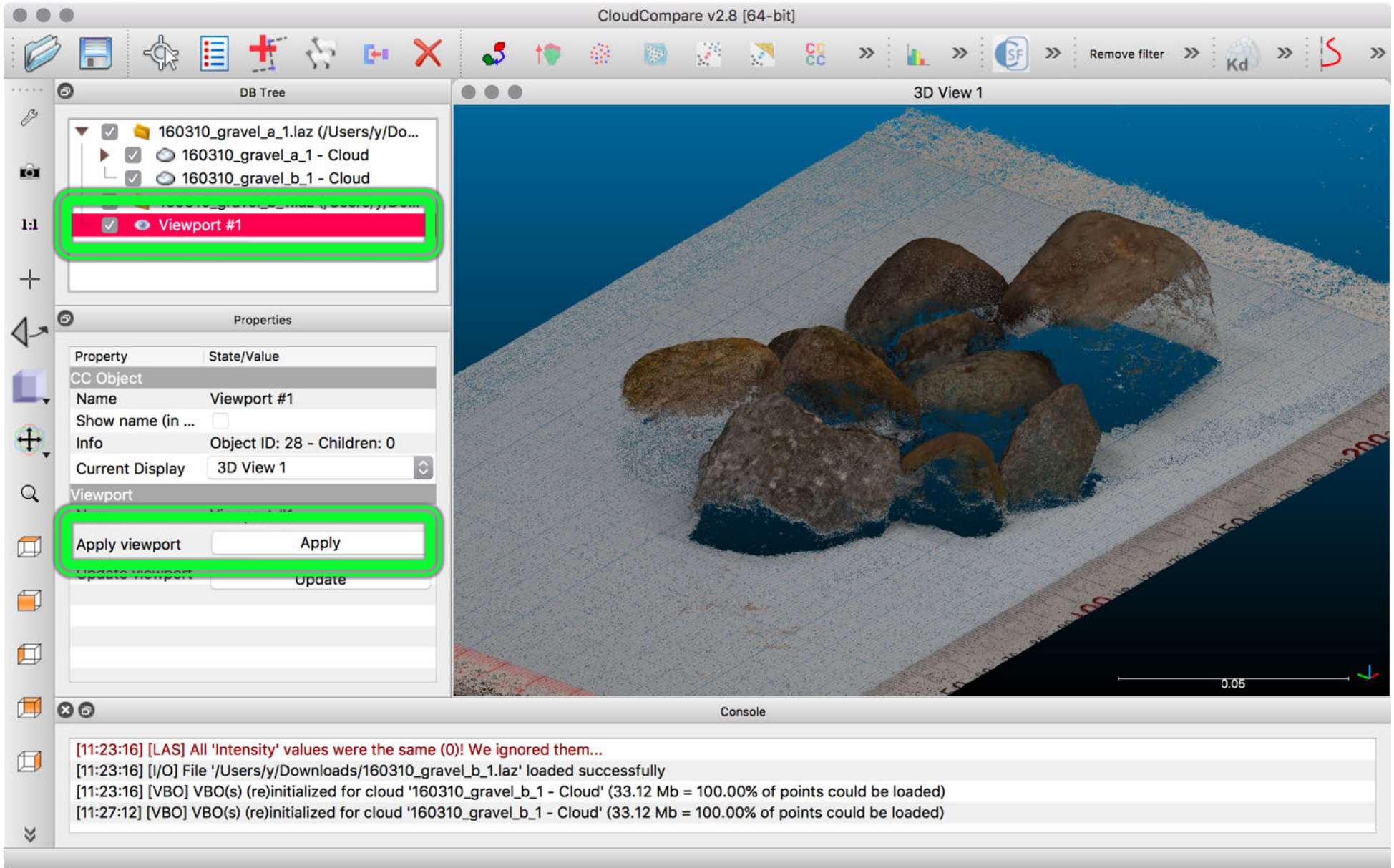
複数の3Dビュー

- 3D View > New
- Properties > Current Display > (select)



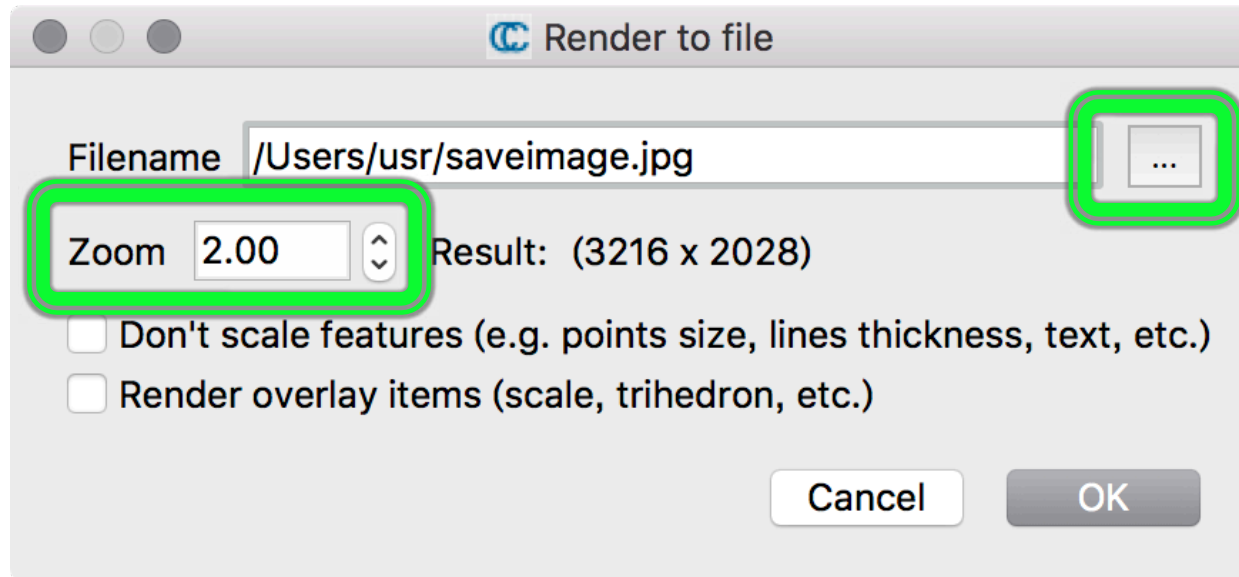
視点の保持

- Display > Save viewpoint as object



表示画面の保存

- Display > Render to File
- 解像度調整
 - Zoom: 2x, 3x, ...



プロジェクトの保存

☆ひとつのフォルダにまとめる

- File > Save ←保存したいフォルダを選択
 - “.bin”形式

